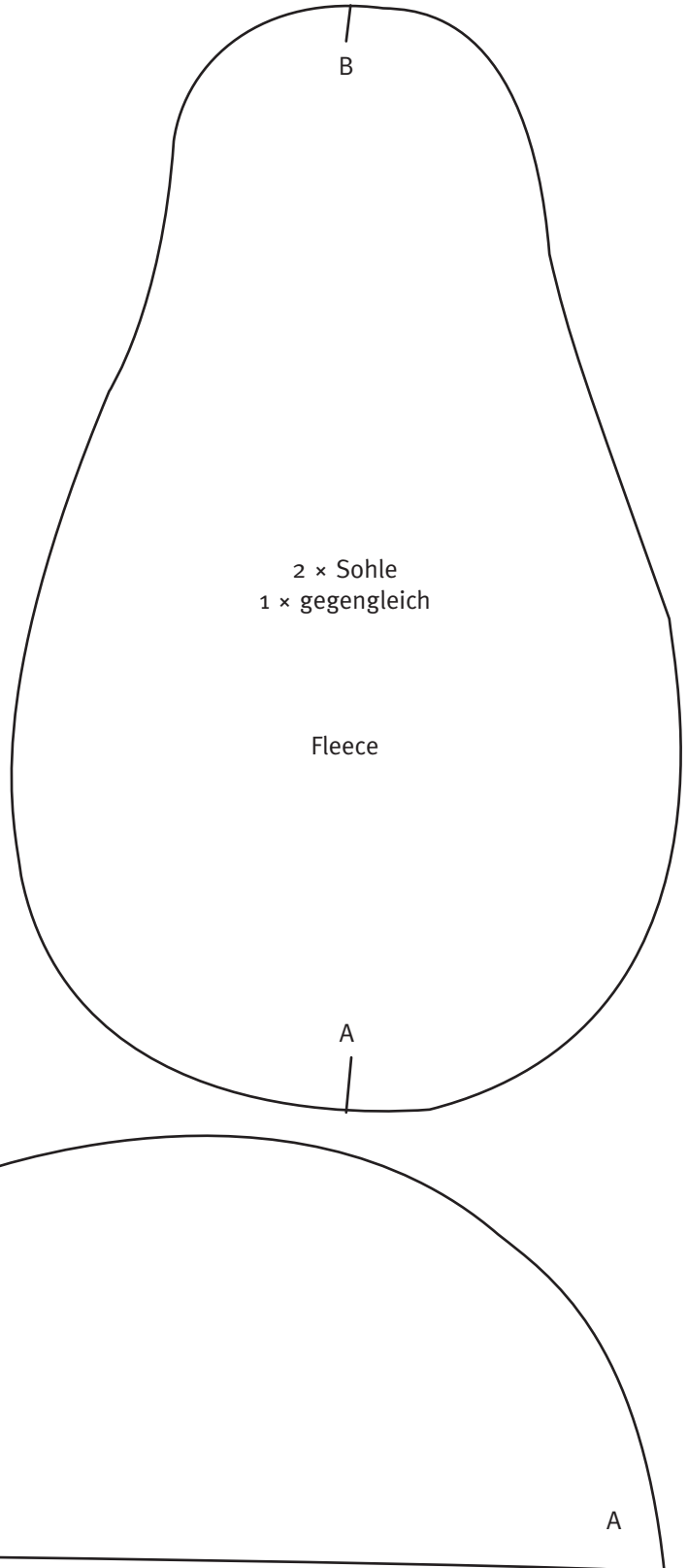
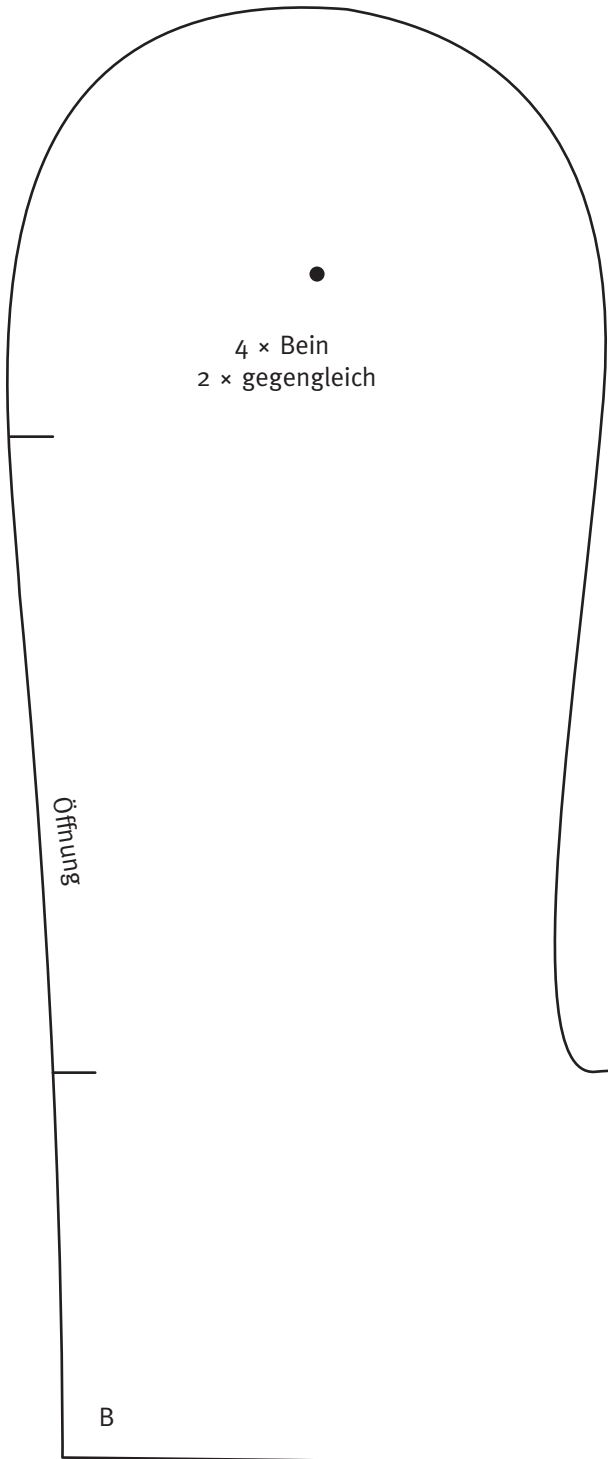
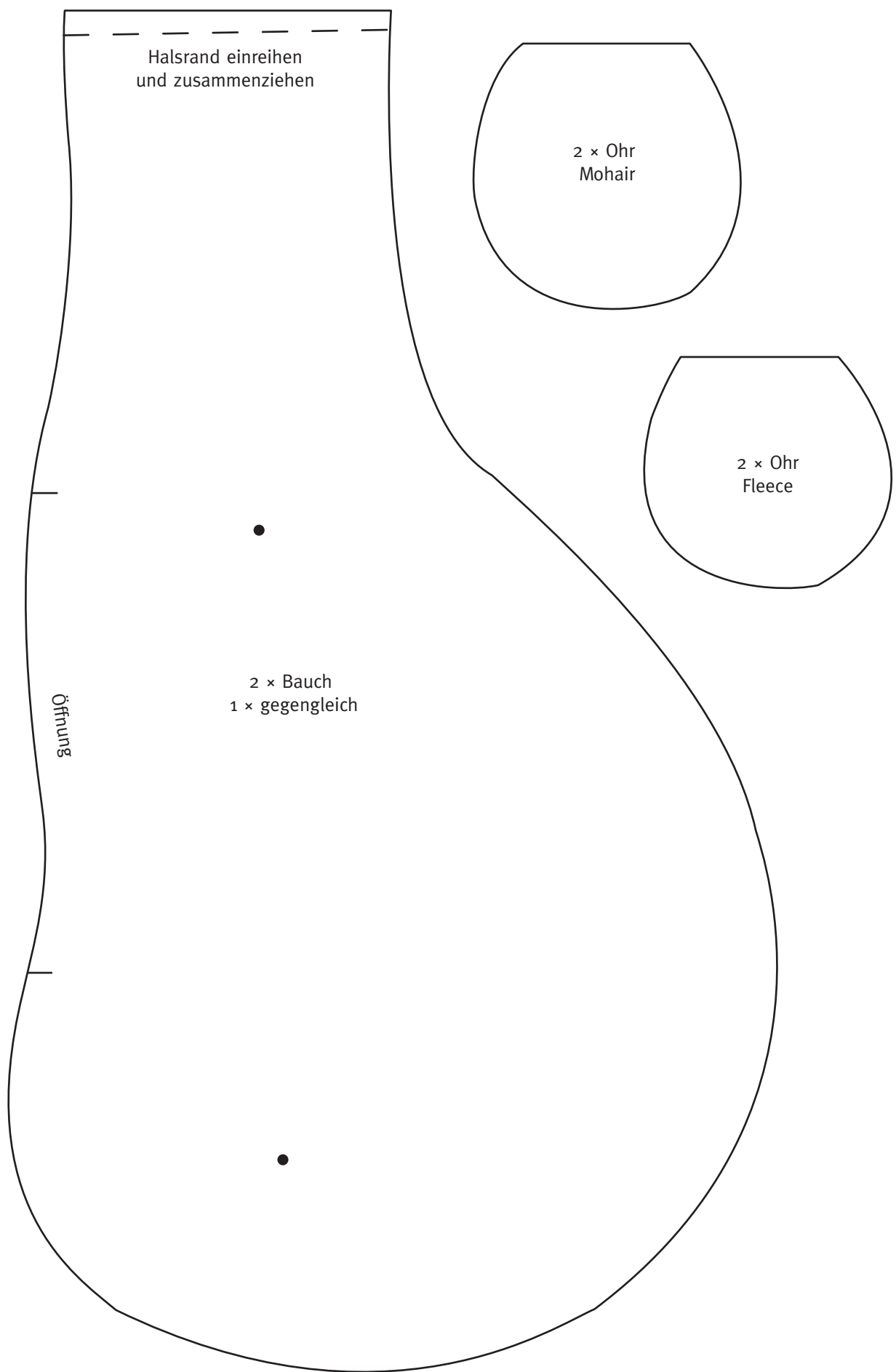


# Lieschen (Seite xx)

5 cm





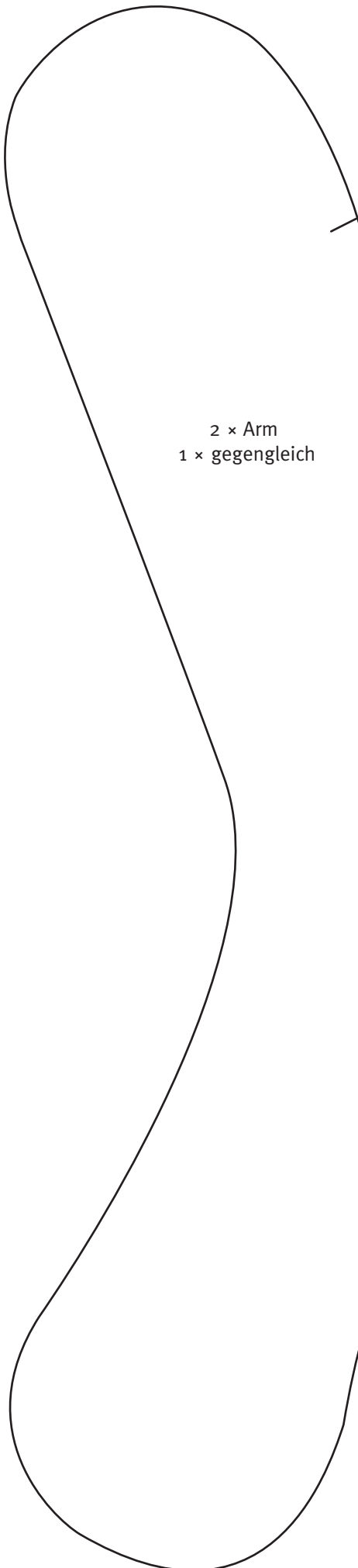
Halsrand einreihen  
und zusammenziehen

2 x Ohr  
Mohair

2 x Ohr  
Fleece

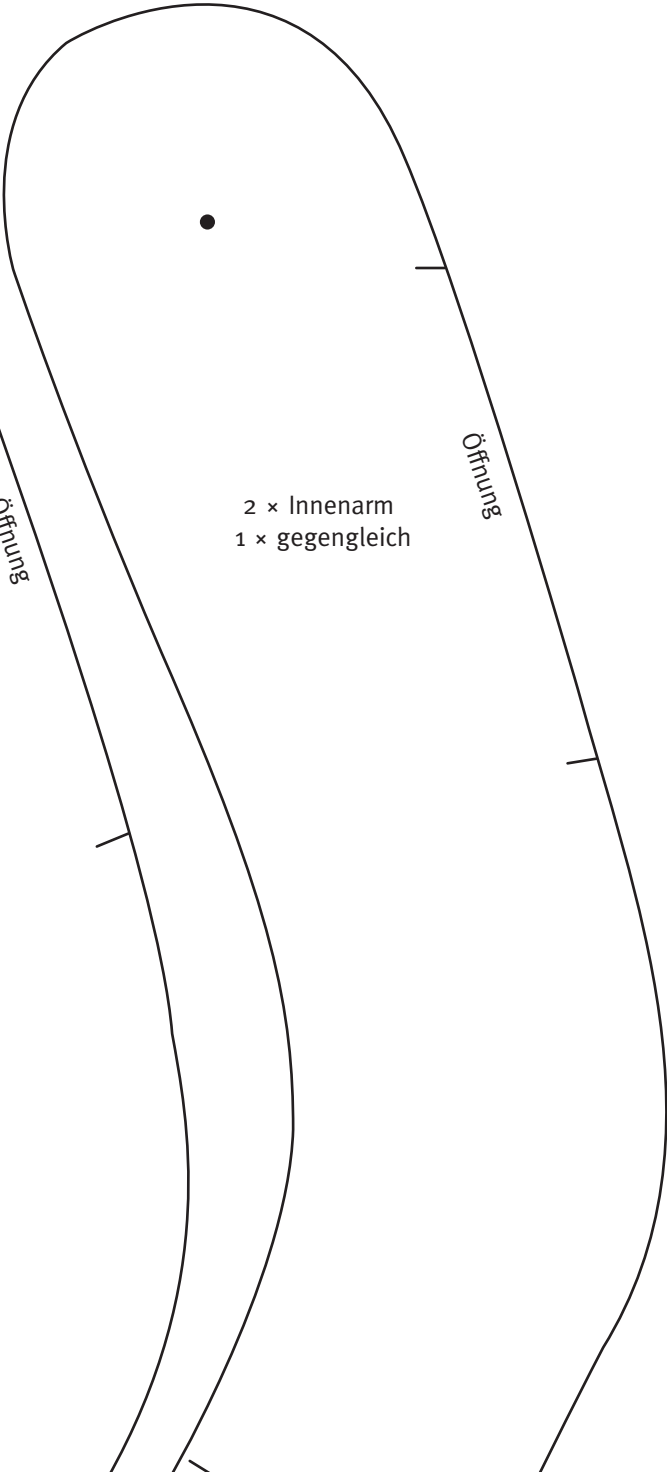
2 x Bauch  
1 x gegengleich

Öffnung



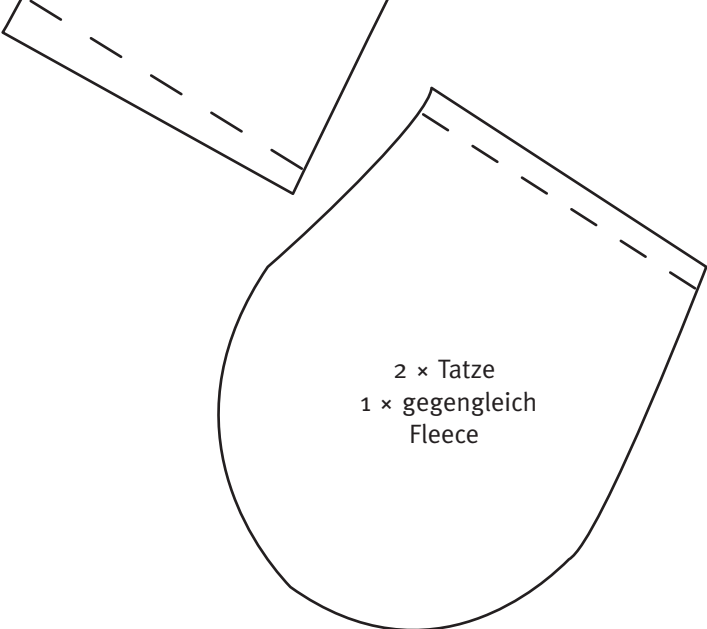
2 x Arm  
1 x gegengleich

Öffnung

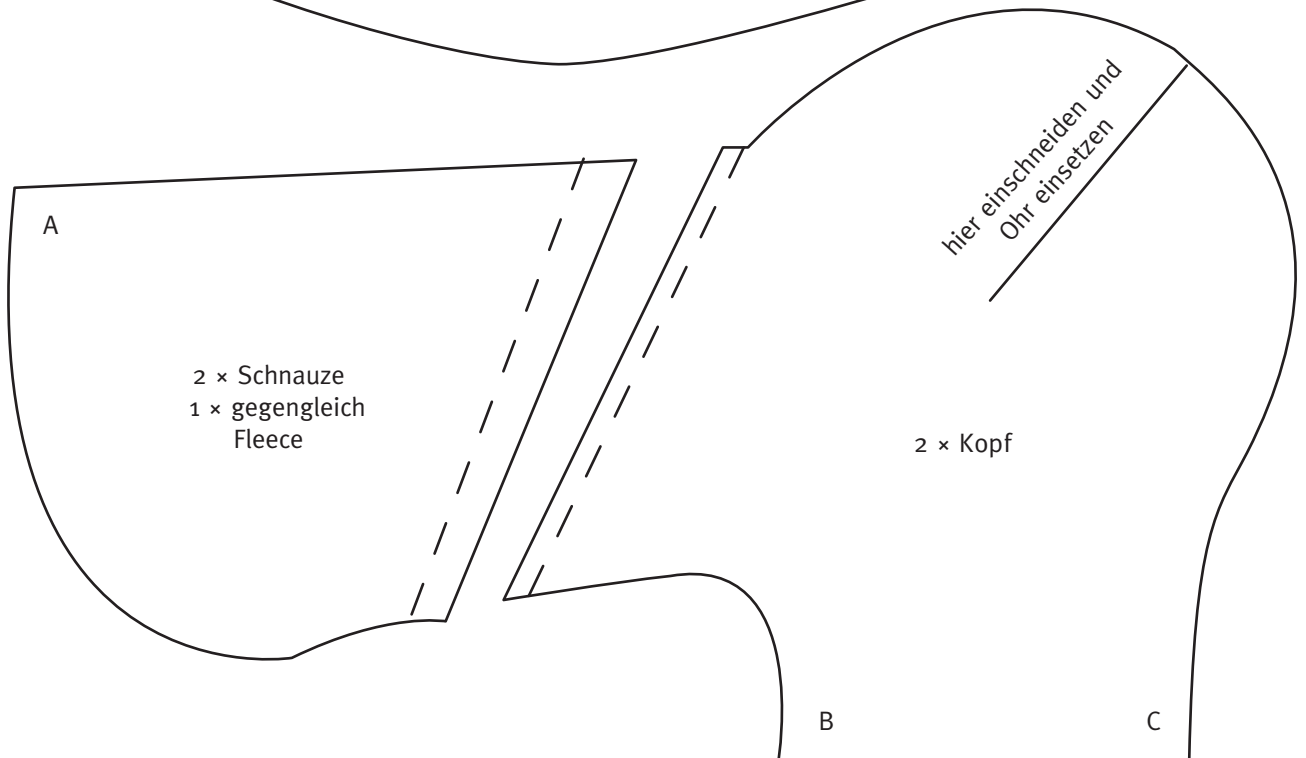
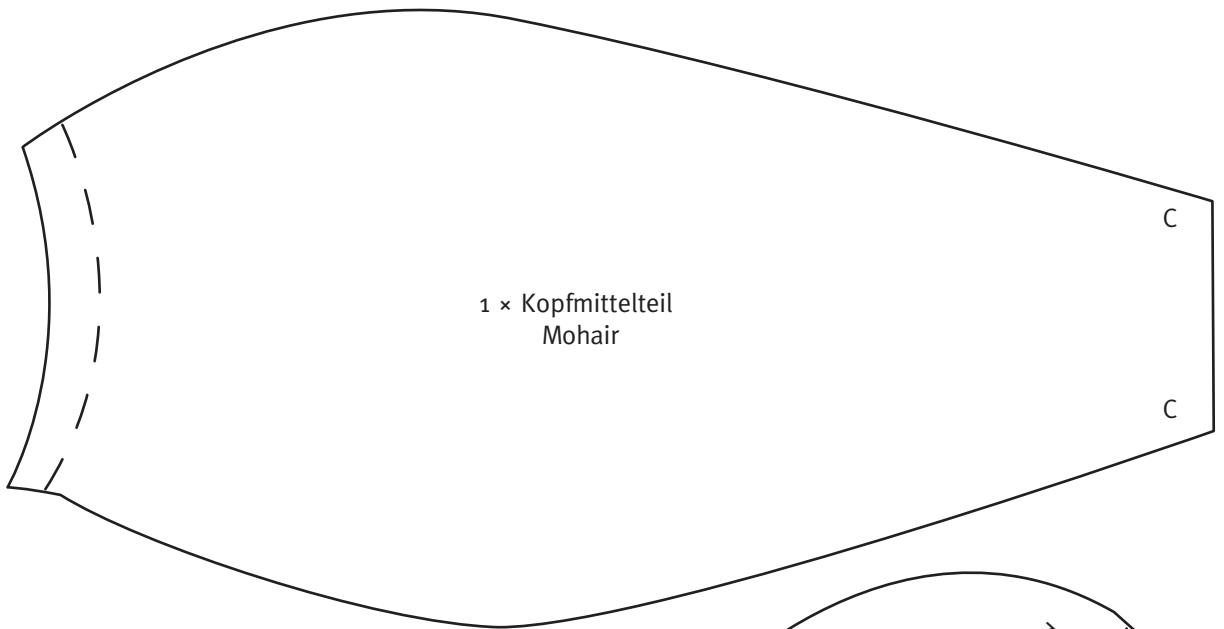
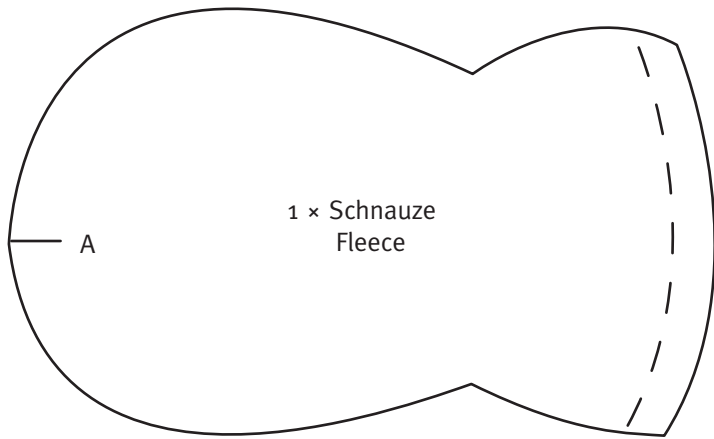


2 x Innenarm  
1 x gegengleich

Öffnung



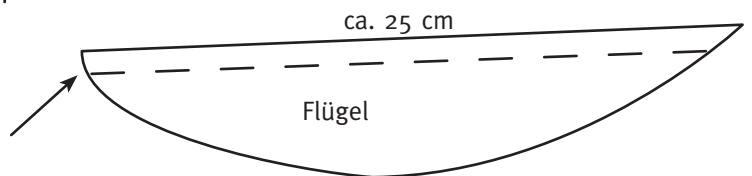
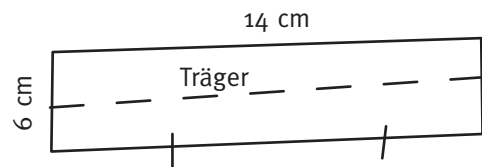
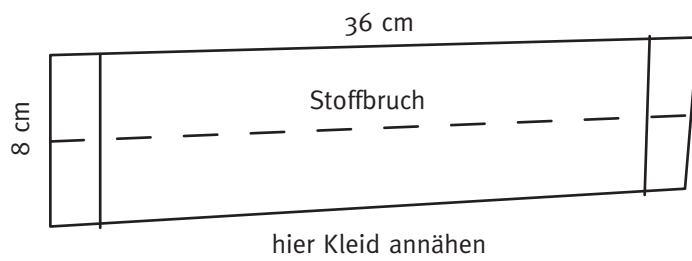
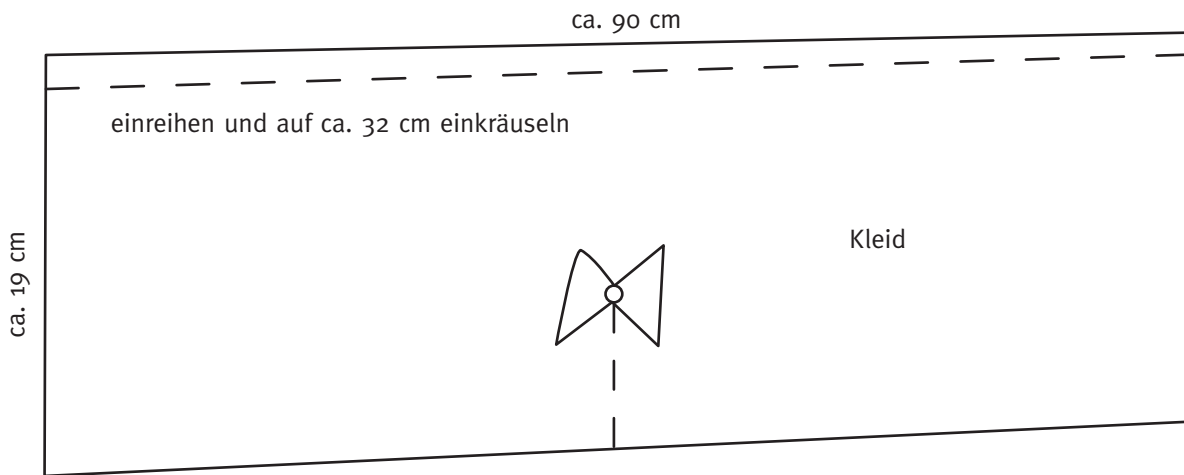
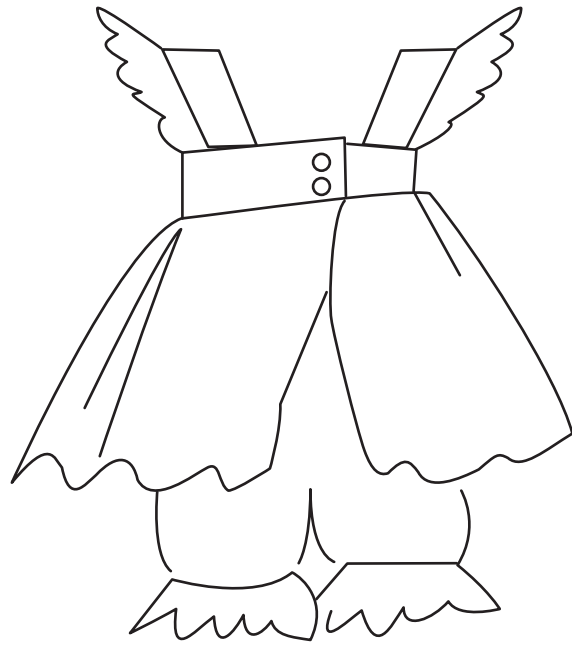
2 x Tatze  
1 x gegengleich  
Fleece



# Kleid

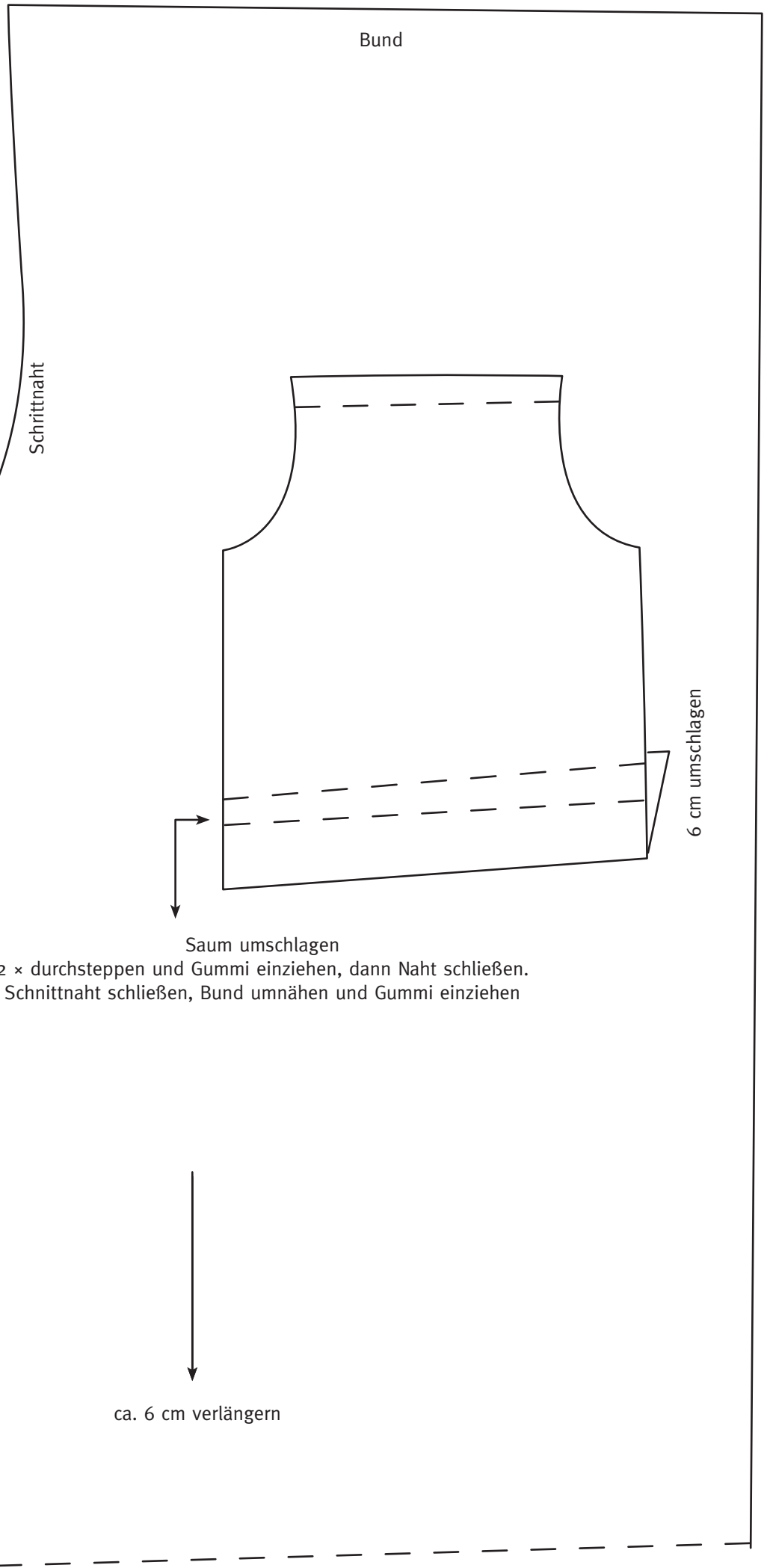
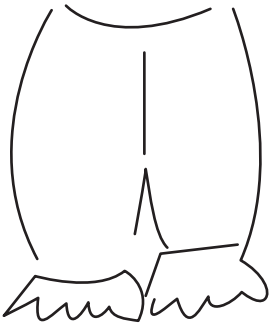


vom Saum ca. 6 cm  
nach oben einreihen  
und Schleife annähen



auf ca. 10 cm einkräuseln  
und an Träger nähen

# Hose



Originalgröße  
→

Beinnah

Schrittnaht

Bund

6 cm umschlagen

Saum umschlagen

2 × durchsteppen und Gummi einziehen, dann Naht schließen.  
Schnittnaht schließen, Bund umnähen und Gummi einziehen

ca. 6 cm verlängern