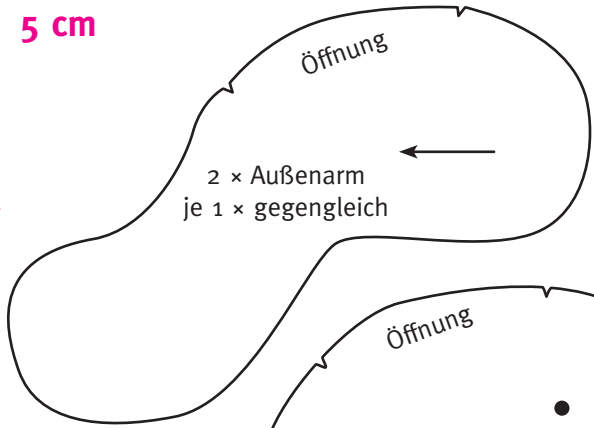


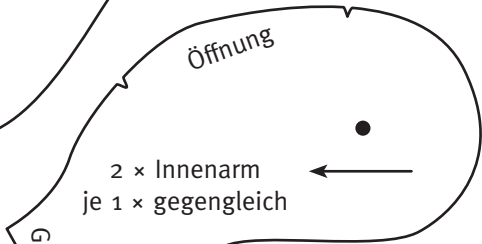
Hase Aloysius (Seite xx)



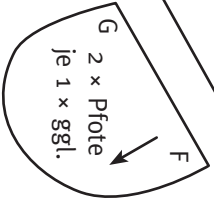
5 cm



2 × Außenarm
je 1 × gegengleich



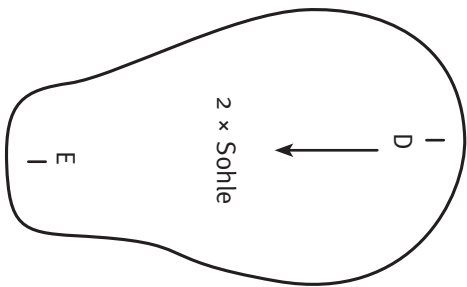
2 × Innenarm
je 1 × gegengleich



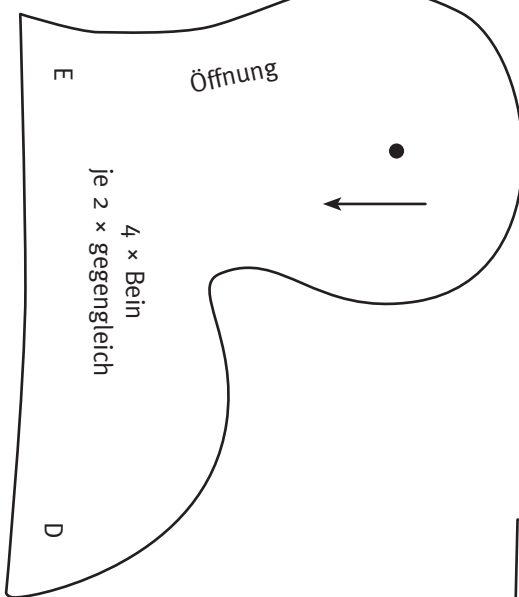
G 2 × Pfote
je 1 × ggl.



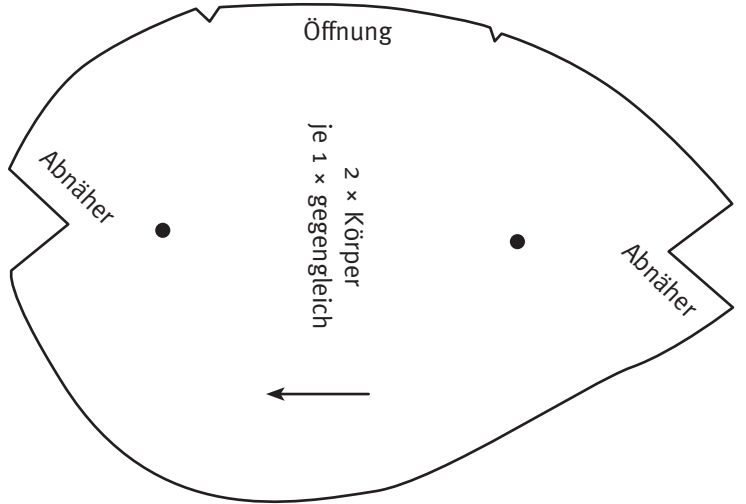
1 × Schwanz



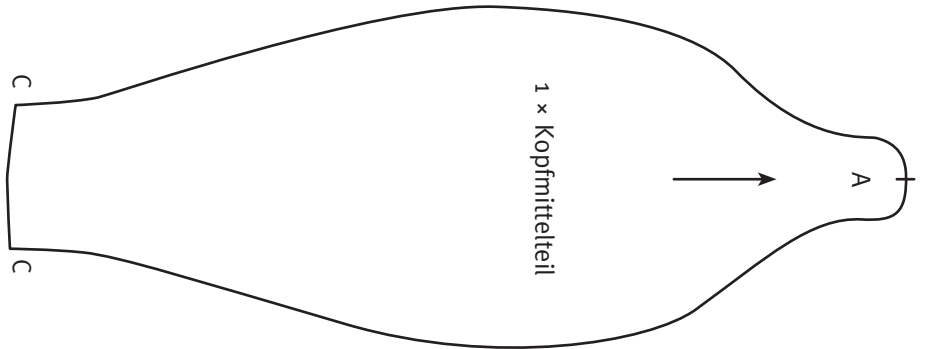
2 × Sohle



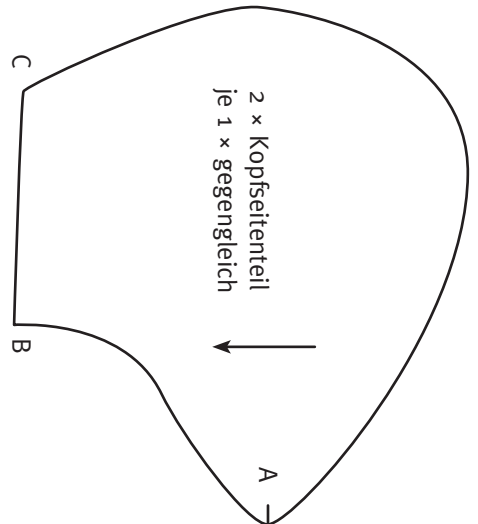
4 × Bein
je 2 × gegengleich



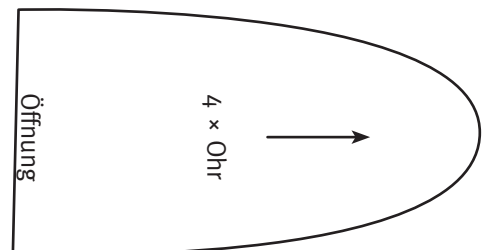
2 × Körper
je 1 × gegengleich



1 × Kopfmittelteil



2 × Kopfseitenteil
je 1 × gegengleich



4 × Ohr

